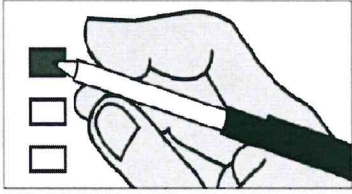


Instructions

How to vote

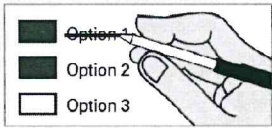


Use a dark blue or black ink pen to completely fill in the box to the left of your choice. Do not use pencil.

Voting more than once for a contest will be an overvote and no votes for that contest will be counted.

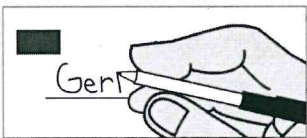
Vote for only one candidate in each race.

If you make a mistake



Draw a line through the entire measure response or candidate's name. You then have the option of making another choice.

Optional write-in



To vote for a candidate not listed, print the name on the blank line provided and fill in the box.



Visit the MyVote website for your online voters' guide and more.
www.myvote.wa.gov

Who donates to campaigns?

View contributors for candidates and measures.

Public Disclosure Commission
www.pdc.wa.gov
Toll Free (877) 601-2828

Your ballot must be postmarked by August 7 election day or deposited in a ballot drop box by 8 pm election night.

READ: Each candidate for partisan office may state a political party that he or she prefers. A candidate's preference does not imply that the candidate is nominated or endorsed by the party, or that the party approves of or associates with that candidate.

U.S. Senator

Partisan Office

- Thor Amundson (Prefers Independent Party)
- Dave Strider (Prefers Independent Party)
- Joey Gibson (Prefers Republican Party)
- Mike Luke (Prefers Libertarian Party)
- GoodSpaceGuy (Prefers Republican Party)
- Clint R. Tannehill (Prefers Democratic Party)
- Maria Cantwell (Prefers Democratic Party)
- Susan Hutchison (Prefers Republican Party)
- Brad Chase (Prefers FDFR Party)
- Tim Owen (Prefers Republican Party)
- Matthew D. Heines (Prefers Republican Party)
- Sam Wright (Prefers The Human Rights Party)
- Art Coday (Prefers Republican Party)
- John Orlinki (Prefers Republican Party)
- Charlie R Jackson (Prefers Independent Party)
- Keith Swank (Prefers Republican Party)
- Alex Tsimerman (Prefers StandupAmerica Party)
- RC Smith (Prefers Republican Party)
- Don L. Rivers (Prefers Democratic Party)
- Jennifer Gigi Ferguson (Prefers Independent Party)
- Steve Hoffman (Prefers Freedom Socialist Party)
- George H. Kalberer (Prefers Democratic Party)
- James Robert "Jimmie" Deal (Prefers Green Party)
- Roque "Rocky" De La Fuente (Prefers Republican Party)
- Jon Butler (Prefers Independent Party)
- Dave Bryant (Prefers Republican Party)
- Mohammad Said (Prefers Democratic Party)
- Matt Hawkins (Prefers Republican Party)
- Glen R Stockwell (Prefers Republican Party)
-

Congressional District 2

**U.S. Representative
Partisan Office**

- Collin Richard Carlson (Prefers Democratic Party)
- Uncle Mover (Prefers Moderate GOP Party)
- Brian Luke (Prefers Libertarian Party)
- Stonewall Jackson Bird (Stoney) (Prefers Green Party)
- Rick Larsen (Prefers Democratic Party)
- Gary Franco (Prefers Independent Party)
-

Legislative District 40

**State Representative Position 1
Partisan Office**

- Alex Ramel (Prefers Democratic Party)
- Debra Lekanoff (Prefers Democratic Party)
- Michael Petrish (Prefers Republican Party)
- Daniel Miller (Prefers Republican Party)
- Rud Browne (Prefers Democratic Party)
- Tom Pasma (Prefers Democratic Party)
-

Legislative District 40

**State Representative Position 2
Partisan Office**

- Jeff Morris (Prefers Democratic Party)
-

San Juan County

**Prosecuting Attorney
Partisan Office**

- Nicholas (Nick) Power (Prefers Democratic Party)
- Randall K. Gaylord (Prefers Democratic Party)
-

Court of Appeals, Division 1, District 3

**Judge Position 1
Nonpartisan Office**

- Tom SeGuine
- Lisa Keeler
- Cecily Hazelrigg-Hernandez
- Roger Leishman
- Rita Latsinova
-

10000090100085

000000148158

1543031187