

SAN JUAN COUNTY MASTER PLAN

Concept Alternatives

Project Background

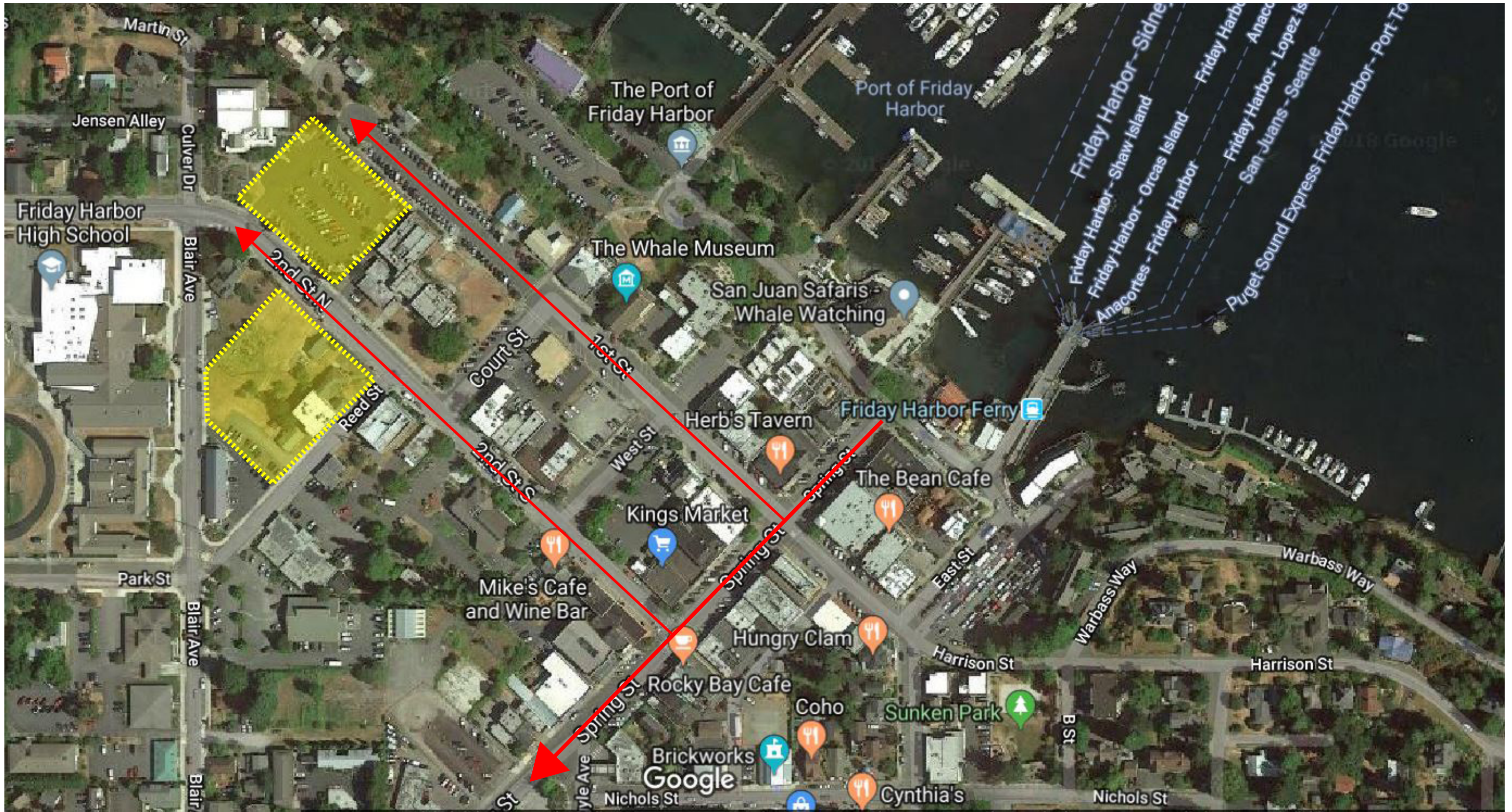
Alternative Review

PROJECT BACKGROUND

Site Visits



PROJECT BACKGROUND



PROJECT BACKGROUND

Site Visits



View along 2nd St. looking southwest



View along 2nd St. looking northeast

PROJECT BACKGROUND

Site A



PROJECT BACKGROUND

Site B



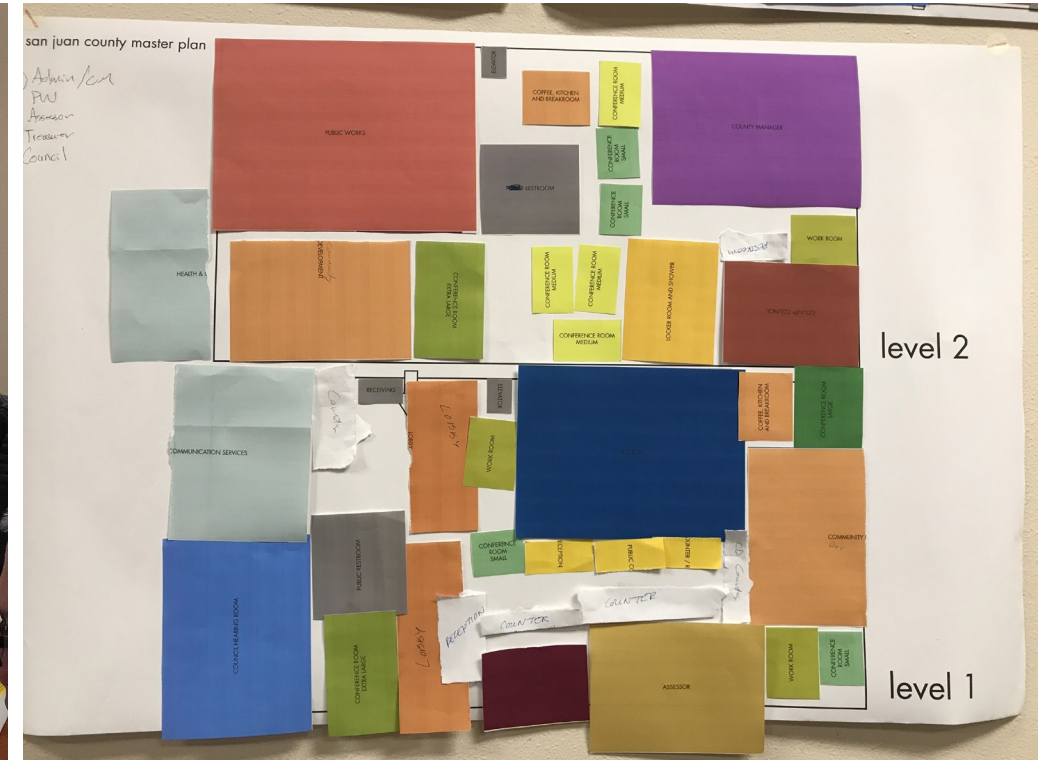
PROJECT BACKGROUND

Facility Tours and Interviews



PROJECT BACKGROUND

Programming Workshops



PROJECT BACKGROUND

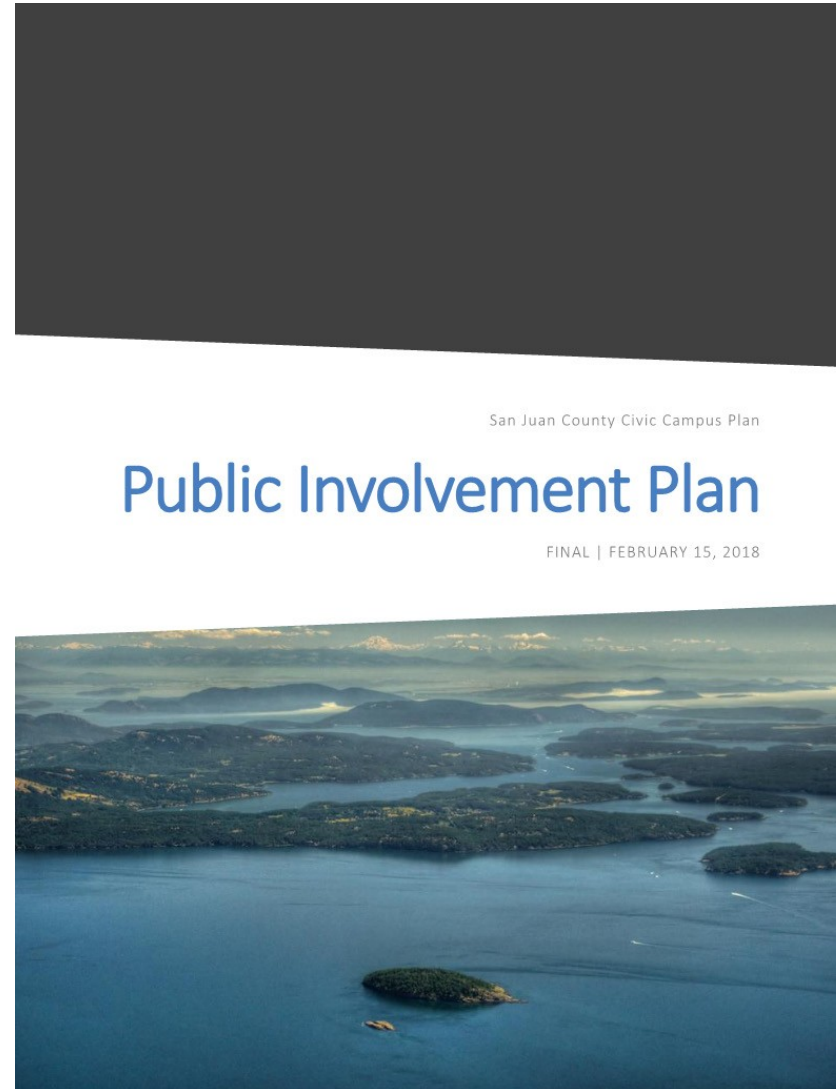
Community Outreach

Public Involvement Plan

Community Engagement Survey

Virtual Open House

Public Comment



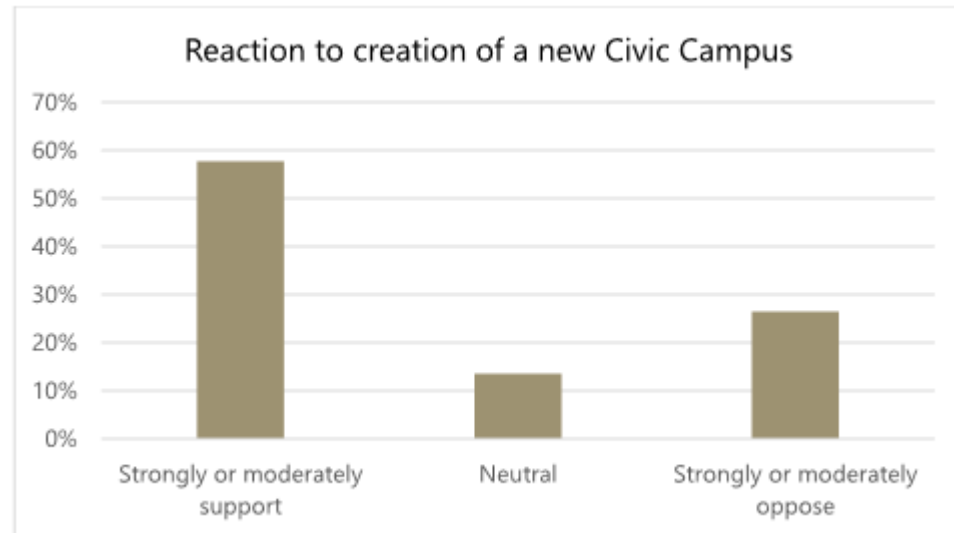
Take survey on possible San Juan County civic campus

Tue Mar 6th, 2018 7:00am · NEWS

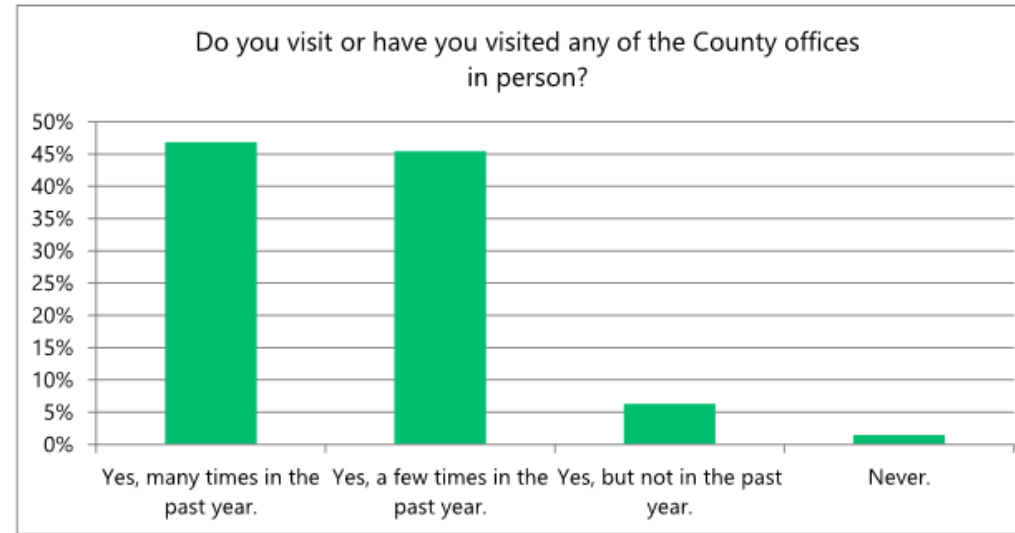


PROJECT BACKGROUND

Community Outreach Survey



Support or neutral:
 74% of San Juan Island
 62% of Orcas Island
 64% of Lopez Island



92% have visited the County Offices in the past year.

Strongly support	23%	59
Moderately support	34%	87
Neutral	14%	34
Moderately opposed	8%	21
Strongly opposed	18%	46
I don't know	2%	6
	Answered	253
	Skipped	20

71% support/neutral
 26% oppose
 3% no opinion

ALTERNATIVE REVIEW

Two Alternatives



ALTERNATIVE A



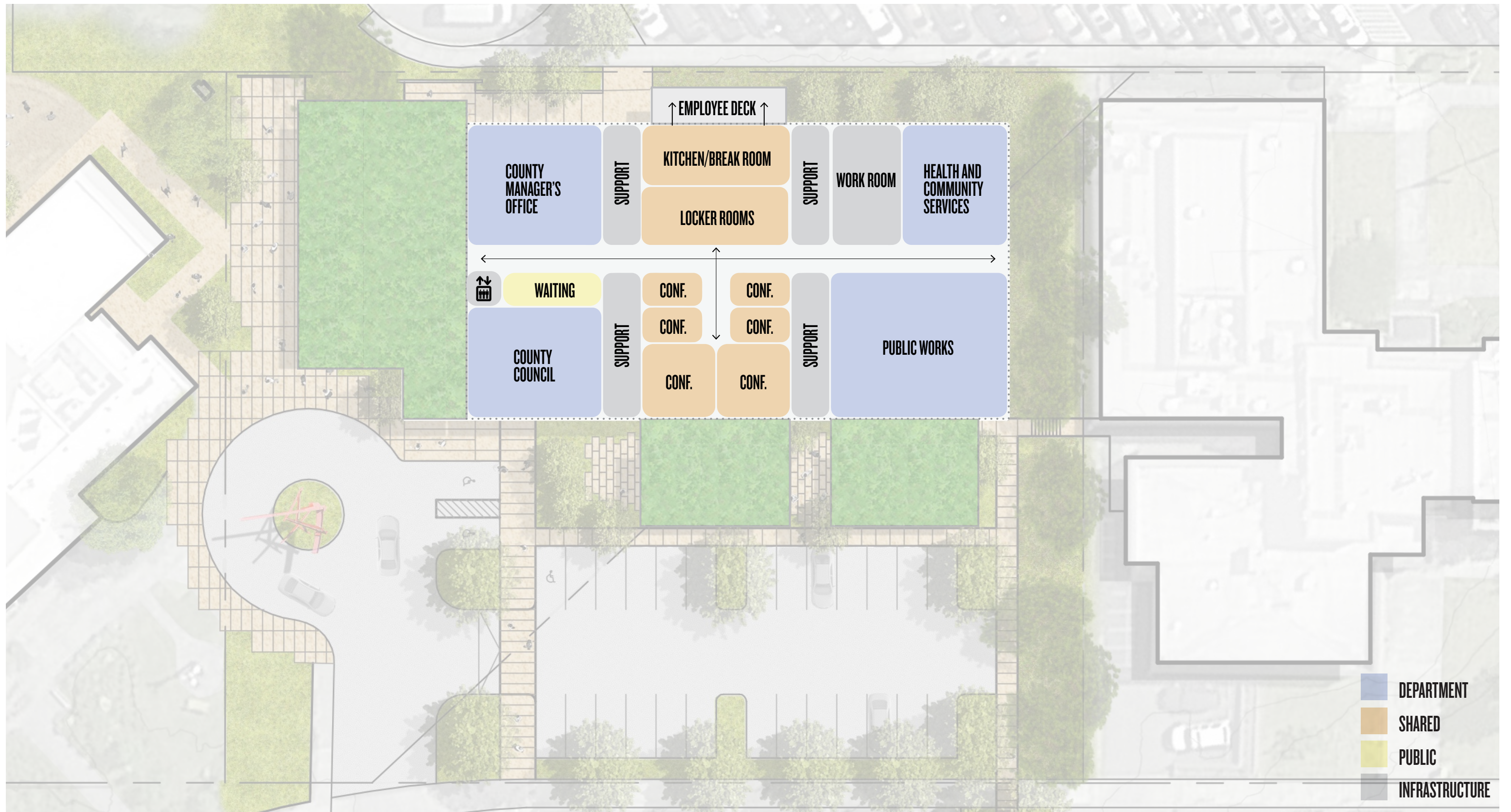
Site Plan



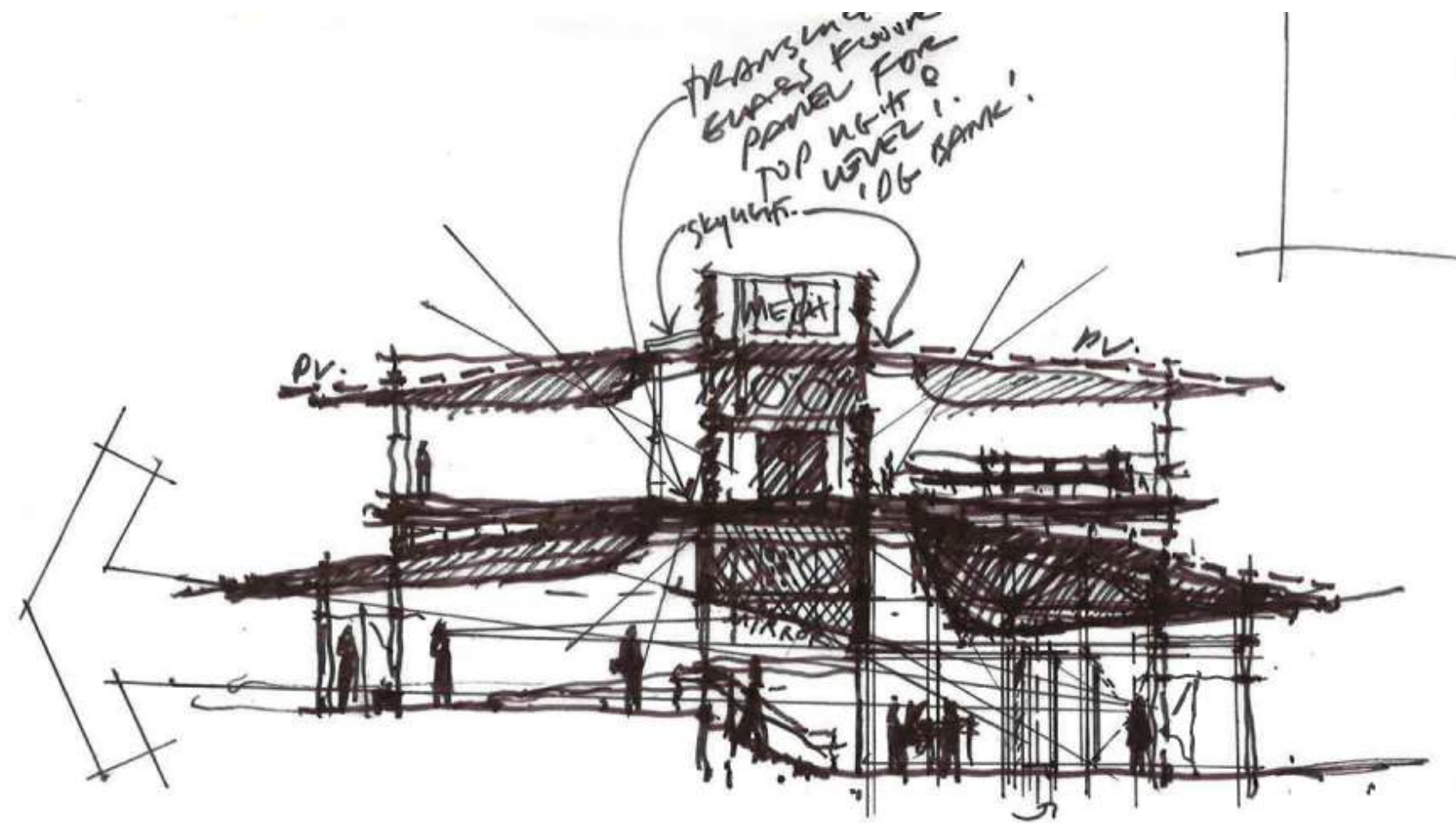
ALTERNATIVE A - LEVEL 1



ALTERNATIVE A - LEVEL 2



ALTERNATIVE A



Section through main lobby

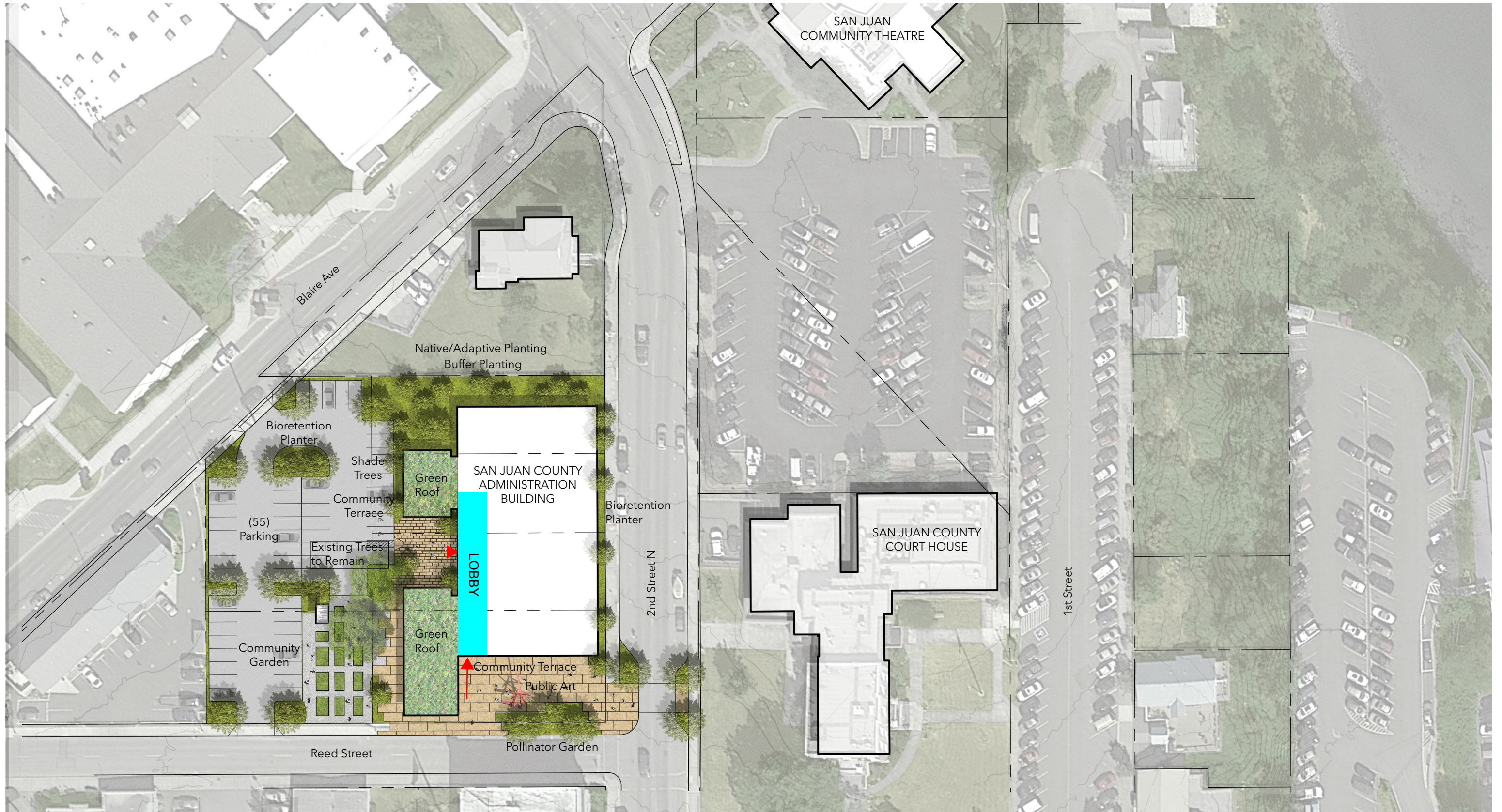


On 1st St. looking northeast



On 1st St. looking northwest

ALTERNATIVE B



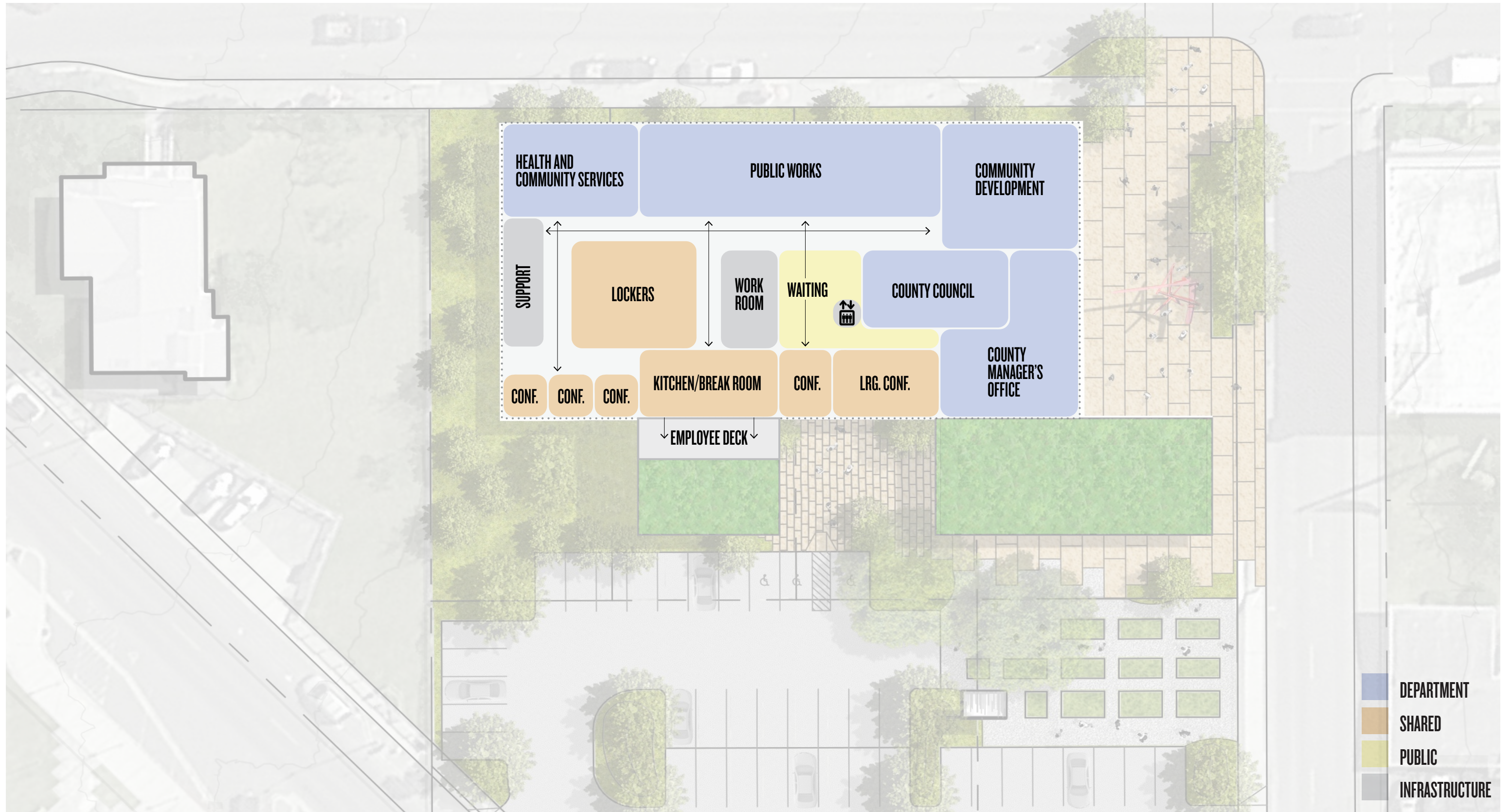
Site Plan



ALTERNATIVE B - LEVEL 1



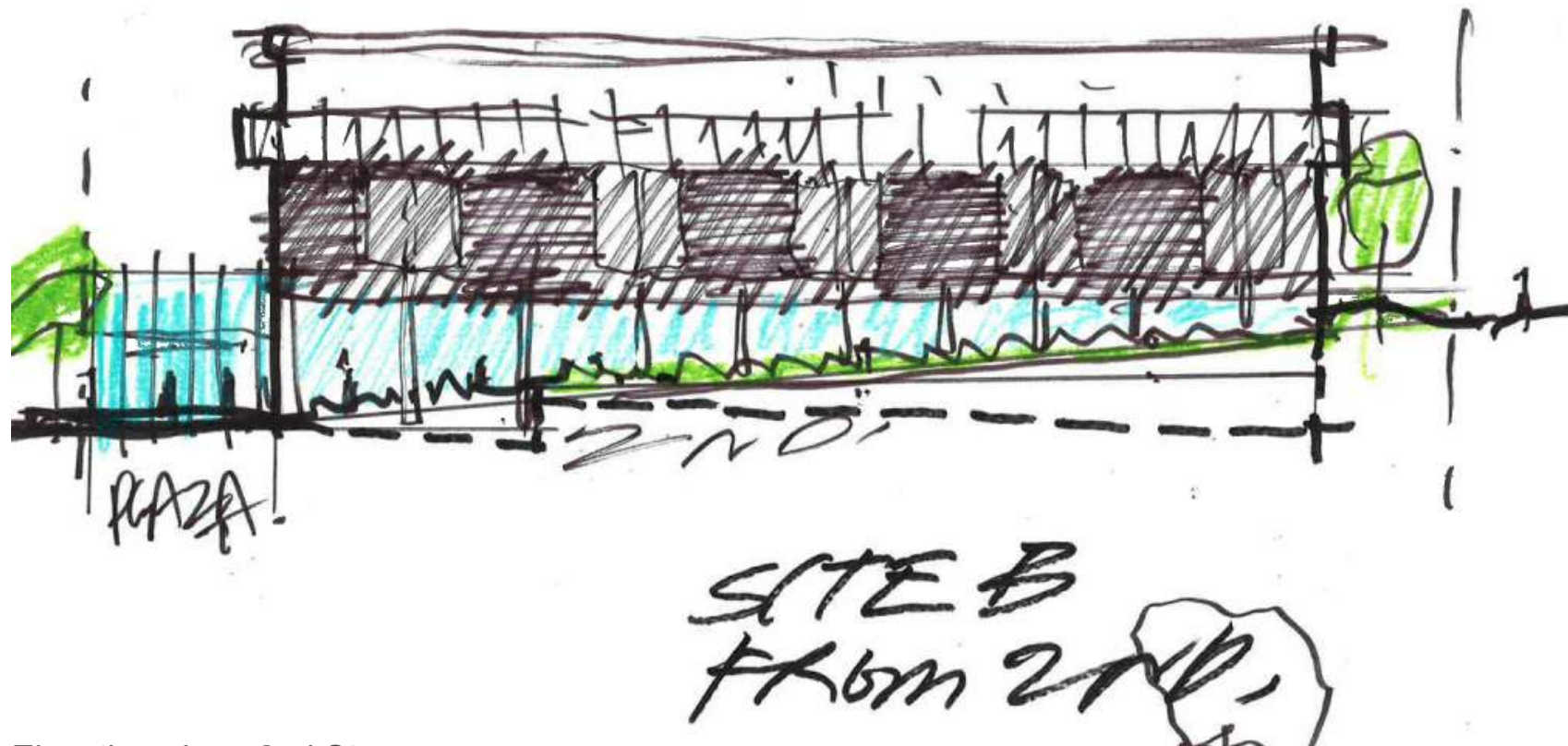
ALTERNATIVE B - LEVEL 2



- DEPARTMENT
- SHARED
- PUBLIC
- INFRASTRUCTURE



ALTERNATIVE B



Elevation along 2nd St.



On 2nd St. looking southwest



Existing site trees