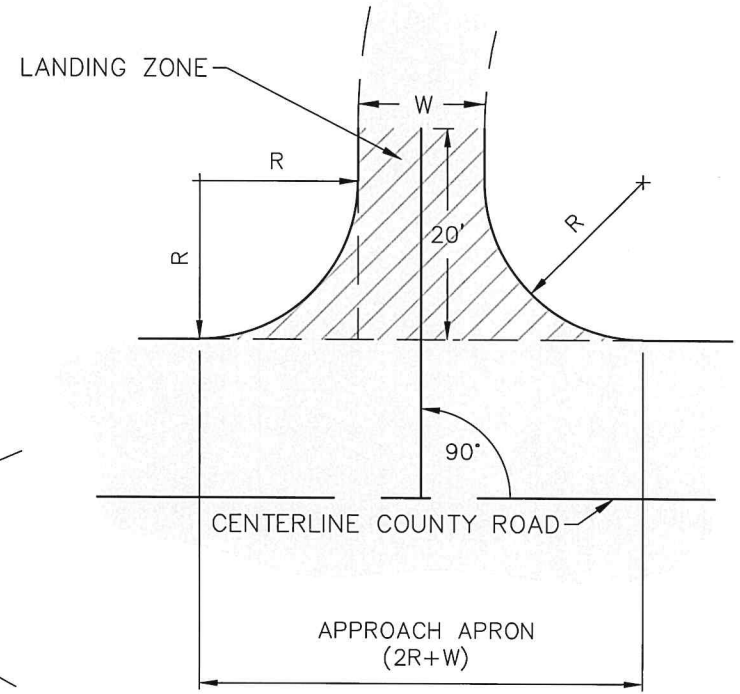


DRIVEWAY PROFILE




DRIVEWAY PLAN

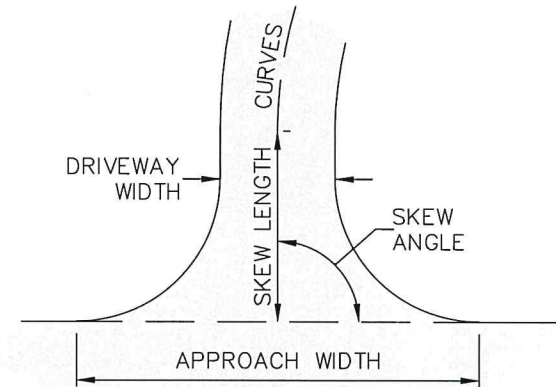
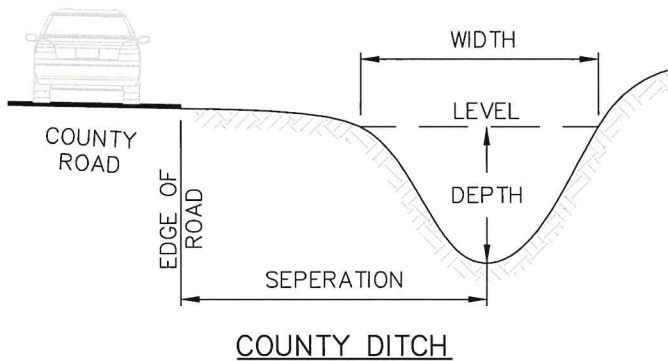
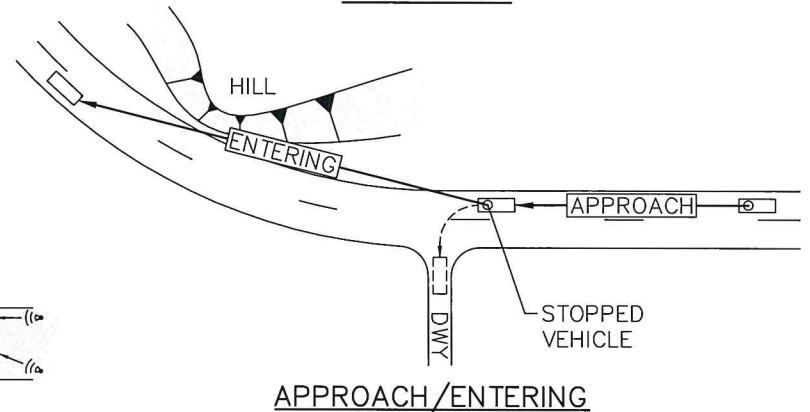
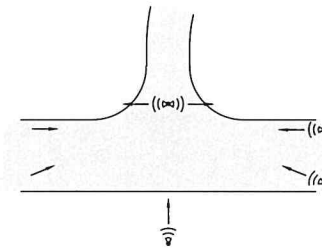
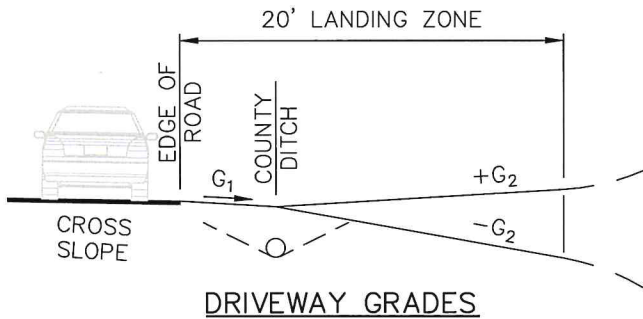
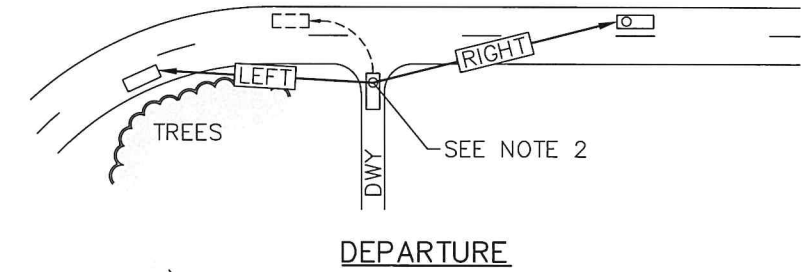
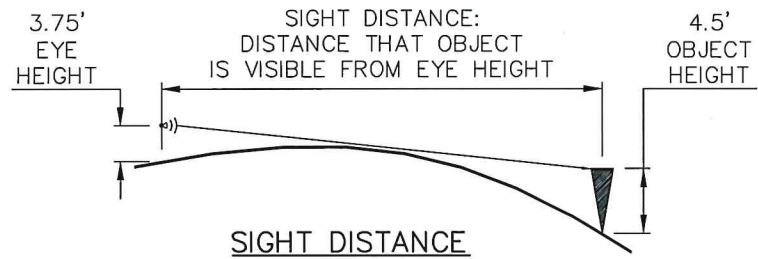
GEOMETRY TABLE

	RADIUS (R)	WIDTH (W)
	FEET	FEET
RESIDENTIAL : DWELLING UNITS	<u>R</u>	<u>W</u>
1-2	15	12
3 OR MORE	15	20
COMMERCIAL : DESIGN VEHICLE	<u>R</u>	<u>W</u>
	FEET	FEET
AASHTO P	25	24
AASHTO SU	30	26
AASHTO WB	35 MIN.	26 MIN.

NOTES


1. THIS STANDARD APPLIES TO A PRIVATE ROAD OR DRIVEWAY BUILT TO PROVIDE ACCESS TO A COUNTY ROAD WITH A FLUSH SHOULDER (NO RAISED CURB).
2. EACH PARCEL SHALL BE LIMITED TO A SINGLE ACCESS POINT TO A COUNTY ROAD EXCEPT AS PROVIDED FOR BY SJCC 18.60.090.
3. CLEAR UNOBSTRUCTED SIGHT DISTANCE SHALL BE PROVIDED IN ACCORDANCE WITH SAN JUAN COUNTY STD. PLAN 130
4. THE DRIVEWAY LANDING ZONE SHALL BE SURFACED WITH 4" MINIMUM COMPACTED DEPTH CRUSHED GRAVEL OVER SUBGRADE PREPARED IN ACCORDANCE WITH WSDOT STD. SPEC. 2-06. SJCC 18.60.090.

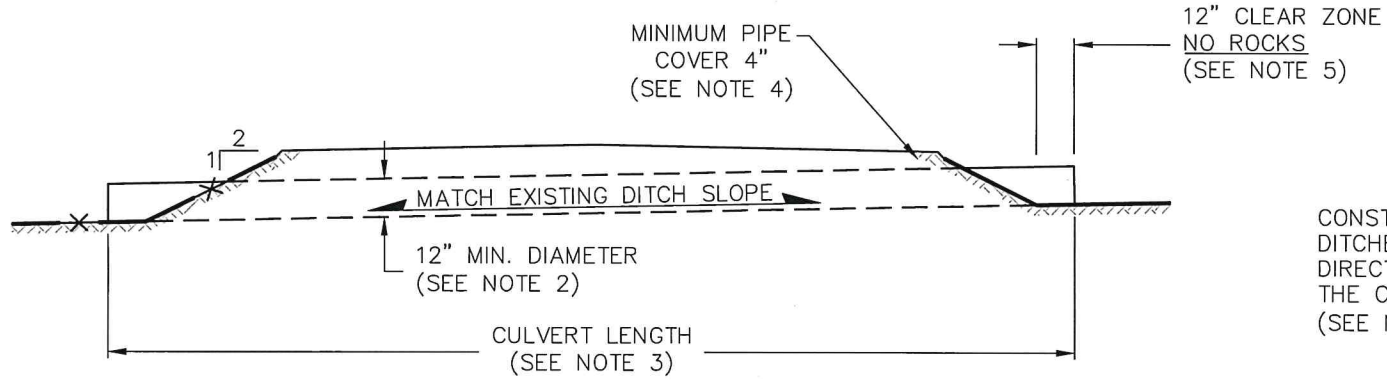
 <p>Public Works Department San Juan County COLIN F. HUNTEMER, PE COUNTY ENGINEER</p>	<p>2020.03.16</p>	<p>DRIVEWAY DETAILS</p> <p>STANDARD PLAN</p> <p>120</p>
--	-------------------	--



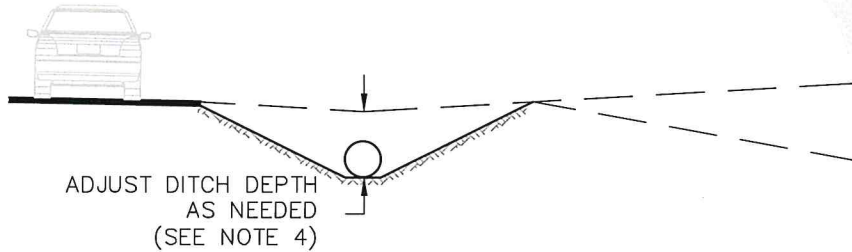
NOTES

1. CLEAR UNOBSTRUCTED SIGHT DISTANCE EQUAL TO 10 TIMES THE POSTED SPEED LIMIT SHALL BE PRESENT WHEN DEPARTING OR APPROACHING/ENTERING THE DRIVEWAY AS SHOWN IN THE STANDARD DRAWING.
2. LEFT AND RIGHT SIGHT DISTANCE SHALL BE MEASURED FROM A POINT SET 10 FEET BACK FROM THE TRAVELED WAY. IF AN EDGE LINE IS NOT MARKED, MEASURE FROM THE EDGE OF PAVEMENT.

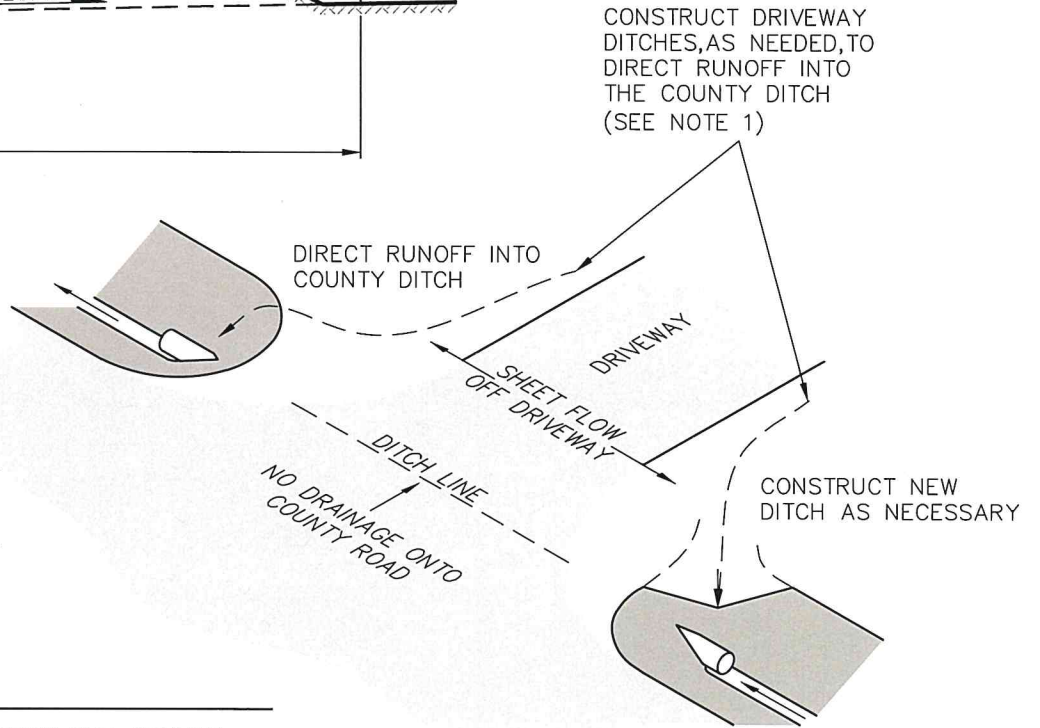
DRIVEWAY INSPECTION LEGEND	
 Public Works Department San Juan County COLIN F. HUNTEMER, PE COUNTY ENGINEER	2020.03.16 STANDARD PLAN 130



CULVERT SECTION




DITCH SECTION



DRAINAGE PLAN

NOTES

1. STORM WATER MANAGEMENT: RUNOFF SHALL BE DIRECTED AWAY FROM THE COUNTY ROADS AND INTO COUNTY ROAD DITCHES, NATURAL DRAINAGE CHANNELS OR APPROVED ONSITE STORM WATER CONVEYANCE AND OR TREATMENT FACILITIES.
2. CULVERT SPECIFICATIONS: CULVERT SHALL BE 12" DOUBLE-WALLED, HIGH DENSITY POLYETHYLENE UNLESS OTHERWISE SPECIFIED BY COUNTY ENGINEERING STAFF. VARIANCE FROM THIS SPECIFICATION MUST BE APPROVED IN WRITING.
3. CULVERT LENGTH: CULVERT MUST BE LONG ENOUGH TO TO ACCOMMODATE THE DRIVEWAY RADII, THE SPECIFIED 2:1 DRIVEWAY FILL SLOPE, PLUS THE REQUIRED 12" CLEAR ZONE AT THE CULVERT ENDS. COUNTY ENGINEERING STAFF WILL PROVIDE A CULVERT LENGTH ESTIMATE, UPON REQUEST.
4. CULVERT DEPTH: CULVERT SHALL BE PLACED DEEP ENOUGH TO ACHIEVE REQUIRED G1 DRIVEWAY GRADE (-4%) AND MINIMUM COVER REQUIREMENTS(4"). ADJUST BOTTOM OF DITCH AS NEEDED, WHILE MAINTAINING EXISTING FLOW DIRECTION AND RELATIVE DITCH GRADE.
5. END TREATMENT: EXTEND CULVERT A MINIMUM OF 12" BEYOND THE TOE OF THE DRIVEWAY FILL SLOPE. MAXIMUM FILL SLOPE ABOVE CULVERT SHALL BE 2:1. DO NOT PLACE ROCKS AT CULVERT ENDS.

DRIVEWAY CULVERT DETAILS		
 Public Works Department San Juan County COLIN F. HUNTEMER, PE COUNTY ENGINEER	2020.03.16	STANDARD PLAN
	200	