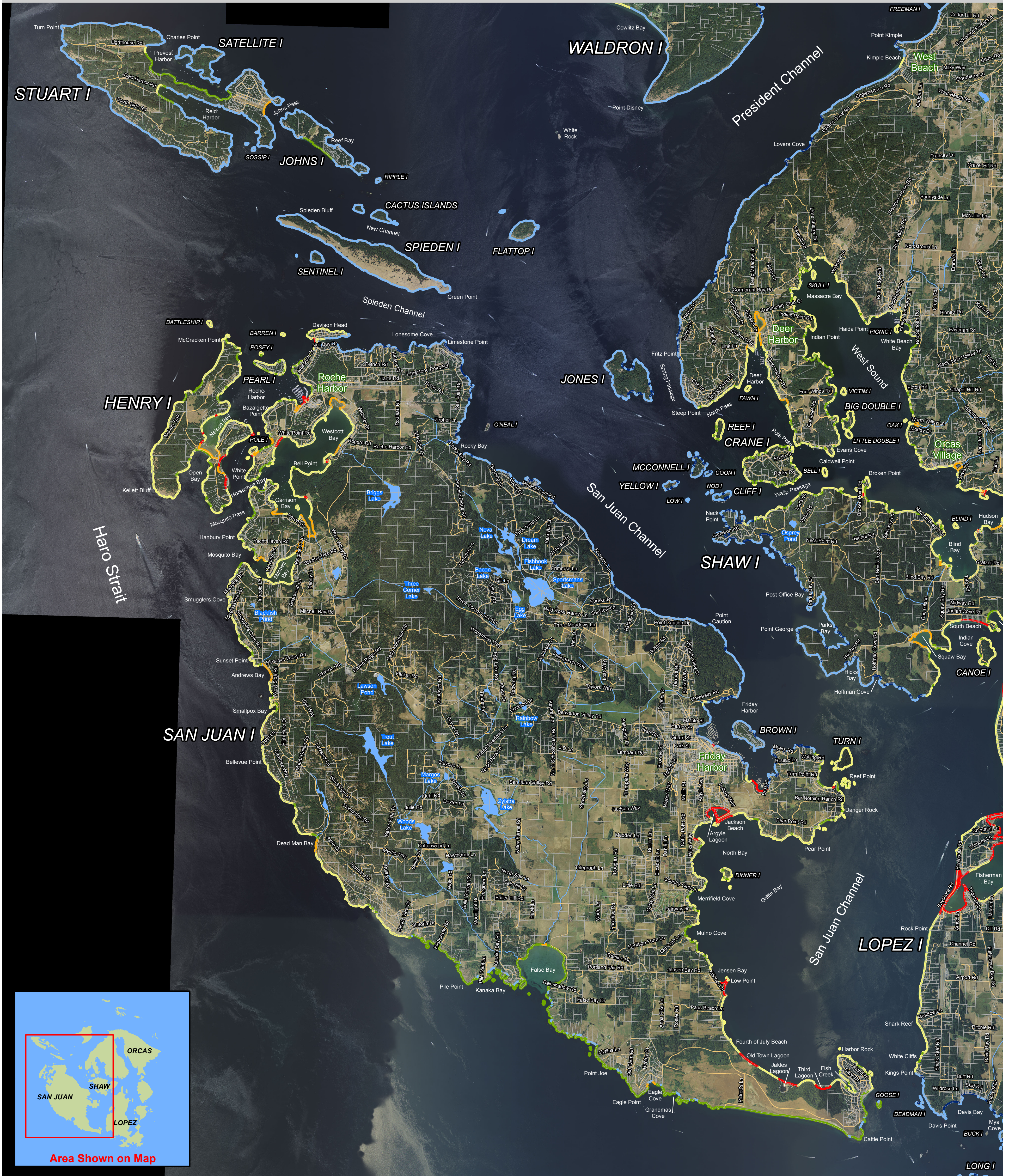


Map 28A:

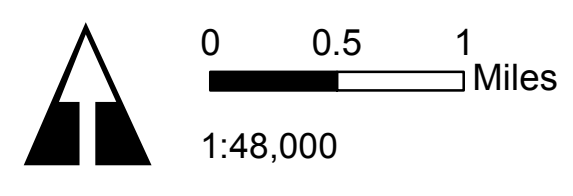
Fish Presence Probability - Juvenile Chum

San Juan County Shoreline Master Program Update



LEGEND
 Probability of presence of juvenile chum salmon [2012]*

- 0.000000 - 0.225000
- 0.225001 - 0.323232
- 0.323233 - 0.450000
- 0.450001 - 0.611842
- 0.611843 - 0.783158
- 0.783159 - 0.960000
- Water bodies [2008]**
- Watercourses [2000]***
- Parcels [2010]**
- Roads [2009]**



All features depicted on this map are approximate. They have not been formally delineated or surveyed and are intended for planning purposes only. Additional site-specific evaluation may be needed to confirm/verify information shown on this map.

The functionality of this map is optimized when viewed digitally.

10.30.2012
 Data sources:
 *Beamer and Fresh
 **San Juan County
 ***Washington Department of Ecology

Shoreline Master Program Update
 SAN JUAN COUNTY, WA



Map 28B:

Fish Presence Probability - Juvenile Chum

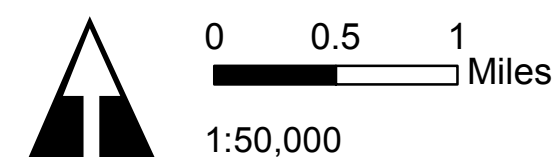
San Juan County Shoreline Master Program Update



LEGEND

Probability of presence of juvenile chum salmon [2012]**

- 0.000000 - 0.225000
- 0.225001 - 0.323232
- 0.323233 - 0.450000
- 0.450001 - 0.611842
- 0.611843 - 0.783158
- 0.783159 - 0.960000
- Water bodies [2008]**
- Watercourses [2000]**
- Parcels [2010]**
- Roads [2009]**



All features depicted on this map are approximate. They have not been formally delineated or surveyed and are intended for planning purposes only. Additional site-specific evaluation may be needed to confirm/verify information shown on this map.

The functionality of this map is optimized when viewed digitally.

10.30.2012

Data sources:

- *Beamer and Fresh
- **San Juan County
- ***Washington Department of Ecology

Shoreline Master Program Update

SAN JUAN COUNTY, WA

THE WATERSHED COMPANY

Map 28C:

Fish Presence Probability - Juvenile Chum

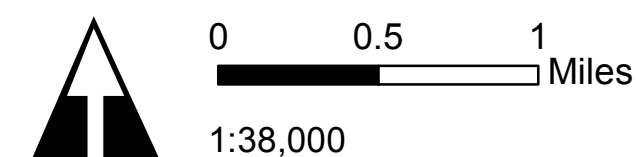
San Juan County Shoreline Master Program Update



LEGEND

Probability of presence of juvenile chum salmon [2012]**

- 0.000000 - 0.225000
- 0.225001 - 0.323232
- 0.323233 - 0.450000
- 0.450001 - 0.611842
- 0.611843 - 0.783158
- 0.783159 - 0.960000
- Water bodies [2008]**
- Watercourses [2000]***
- Parcels [2010]**
- Roads [2009]**



All features depicted on this map are approximate. They have not been formally delineated or surveyed and are intended for planning purposes only. Additional site-specific evaluation may be needed to confirm/verify information shown on this map.

The functionality of this map is optimized when viewed digitally.

10.30.2012

Data sources:

- **Beamer and Fresh
- **San Juan County
- ***Washington Department of Ecology

Shoreline Master Program Update

SAN JUAN COUNTY, WA

