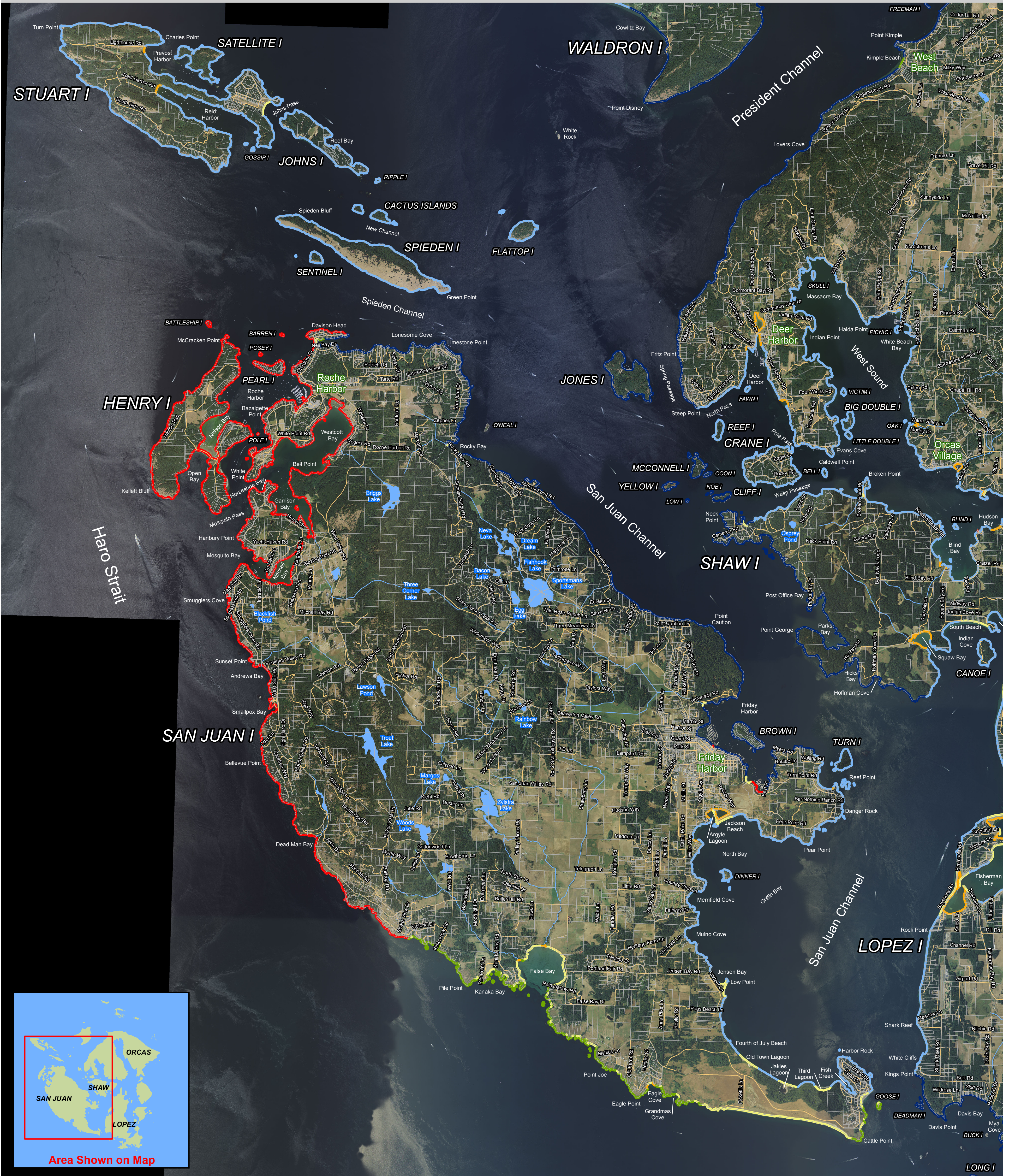


Map 29A:

Fish Presence Probability - Juvenile Pink Salmon

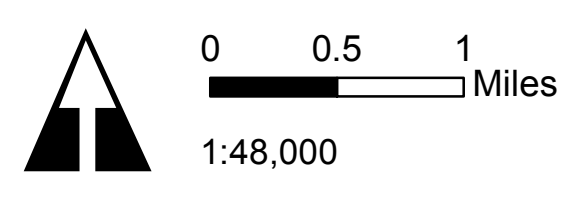
San Juan County Shoreline Master Program Update



LEGEND
 Probability of presence of juvenile pink salmon [2012]*

- 0.000000 - 0.142857
- 0.142858 - 0.300752
- 0.300753 - 0.409091
- 0.409092 - 0.477273
- 0.477274 - 0.612245
- 0.612246 - 0.857143

Water bodies [2008]**
 Watercourses [2000]***
 Parcels [2010]**
 Roads [2009]**



All features depicted on this map are approximate. They have not been formally delineated or surveyed and are intended for planning purposes only. Additional site-specific evaluation may be needed to confirm/verify information shown on this map.

The functionality of this map is optimized when viewed digitally.

10.30.2012
 Data sources:
 *Beamer and Fresh
 **San Juan County
 ***Washington Department of Ecology

Shoreline Master Program Update
 SAN JUAN COUNTY, WA



Map 29B:

Fish Presence Probability - Juvenile Pink Salmon

San Juan County Shoreline Master Program Update



LEGEND

Probability of presence of juvenile pink salmon [2012]*

- 0.000000 - 0.142857
- 0.142858 - 0.300752
- 0.300753 - 0.409091
- 0.409092 - 0.477273
- 0.477274 - 0.612245
- 0.612246 - 0.857143
- Water bodies [2008]**
- Watercourses [2008]**
- Parcels [2010]**
- Roads [2009]**



0 0.5 1 Miles
1:50,000

All features depicted on this map are approximate. They have not been formally delineated or surveyed and are intended for planning purposes only. Additional site-specific evaluation may be needed to confirm/verify information shown on this map.

The functionality of this map is optimized when viewed digitally.

10.30.2012

Data sources:

- *Beamer and Fresh
- **San Juan County
- ***Washington Department of Ecology

Shoreline Master Program Update
SAN JUAN COUNTY, WA



Map 29C:

Fish Presence Probability - Juvenile Pink Salmon

San Juan County Shoreline Master Program Update



LEGEND

Probability of presence of juvenile pink salmon [2012]*

- 0.000000 - 0.142857
- 0.142858 - 0.300752
- 0.300753 - 0.409091
- 0.409092 - 0.477273
- 0.477274 - 0.612245
- 0.612246 - 0.857143
- Water bodies [2008]**
- Watercourses [2000]***
- Parcels [2010]**
- Roads [2009]**



0 0.5 1 Miles
1:38,000

All features depicted on this map are approximate. They have not been formally delineated or surveyed and are intended for planning purposes only. Additional site-specific evaluation may be needed to confirm/verify information shown on this map.

The functionality of this map is optimized when viewed digitally.

10.30.2012

Data sources:

- *Beamer and Fresh
- **San Juan County
- ***Washington Department of Ecology

Shoreline Master Program Update

SAN JUAN COUNTY, WA

